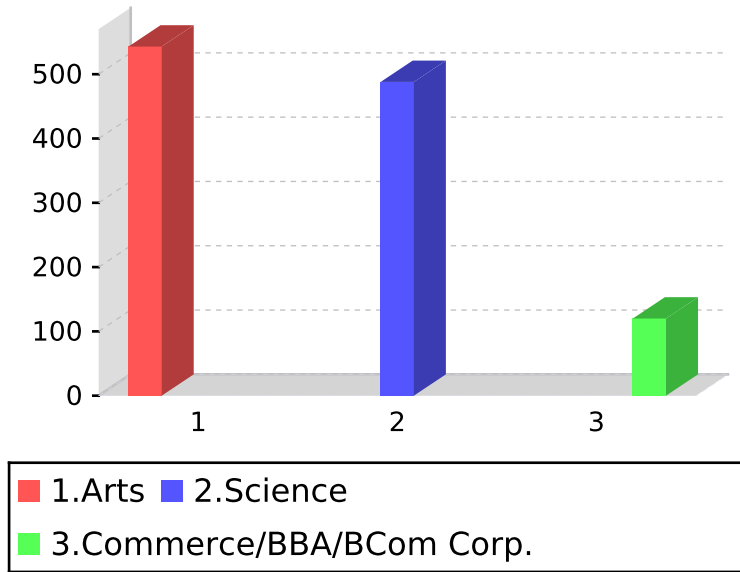




A Report
On
Student Satisfaction Survey
Exit Poll 2022-2023

SHIFT I
All Programs
Students Profile

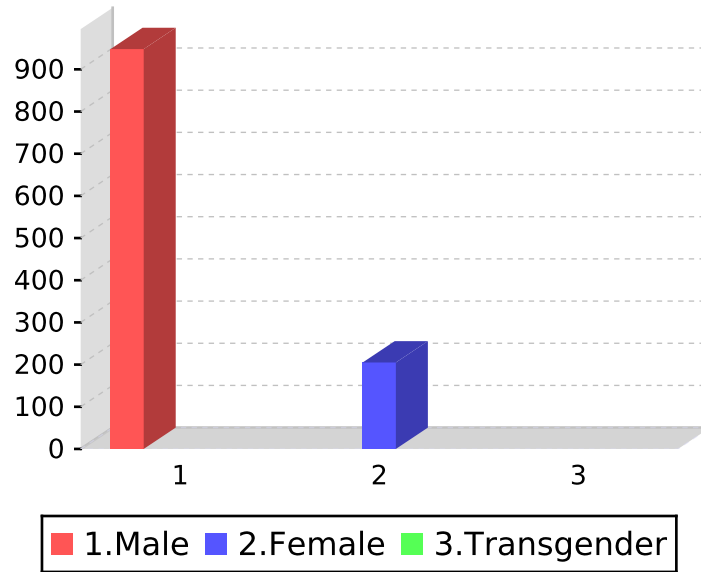
Programme of Study



	Votes Count	Vote (%)
1.Arts	543	47.18
2.Science	488	42.40
3.Commerce/BBA/BCom Corp.	120	10.43

SHIFT I
All Programs
Students Profile

Gender



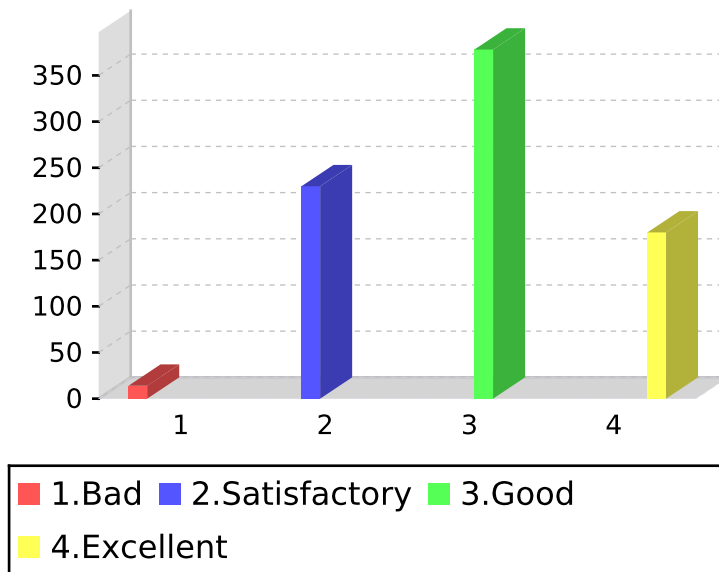
	Votes Count	Vote (%)
1.Male	948	82.22
2.Female	205	17.78
3.Transgender	0	0.00

SHIFT I

All Programs

Relevance of Syllabus under restructured curriculum

Quality and relevance of Major Core



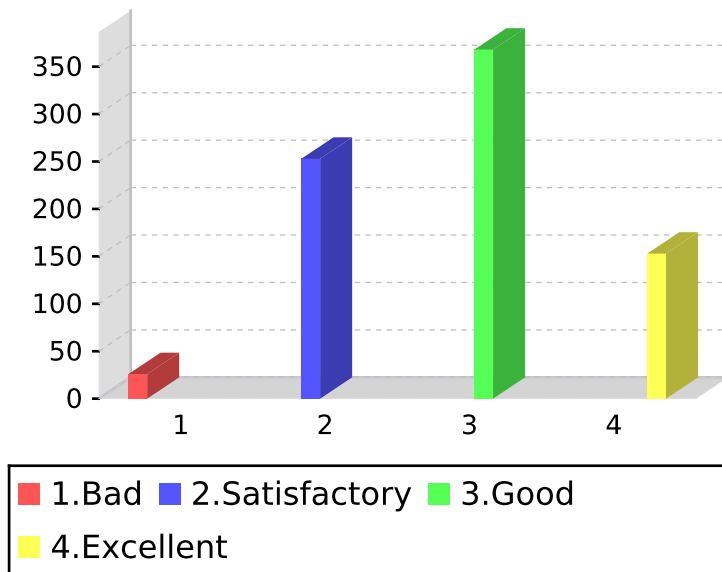
	Votes Count	Vote (%)
1.Bad	14	1.75
2.Satisfactory	230	28.68
3.Good	378	47.13
4.Excellent	180	22.44

SHIFT I

All Programs

Relevance of Syllabus under restructured curriculum

Quality and relevance of Skill-Based Programme



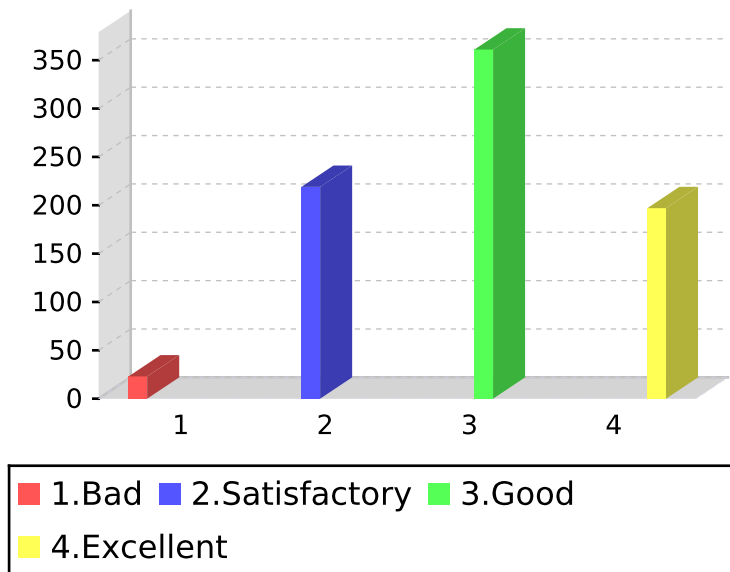
	Votes Count	Vote (%)
1.Bad	26	3.25
2.Satisfactory	253	31.63
3.Good	368	46.00
4.Excellent	153	19.13

SHIFT I

All Programs

Relevance of Syllabus under restructured curriculum

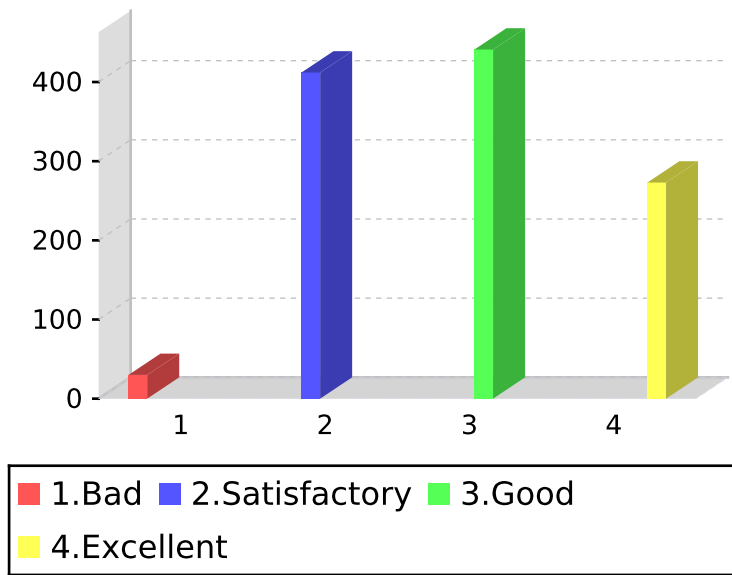
Quality and relevance of Internship Programme



	Votes Count	Vote (%)
1.Bad	23	2.88
2.Satisfactory	219	27.38
3.Good	361	45.13
4.Excellent	197	24.63

SHIFT I
All Programs
Teachers

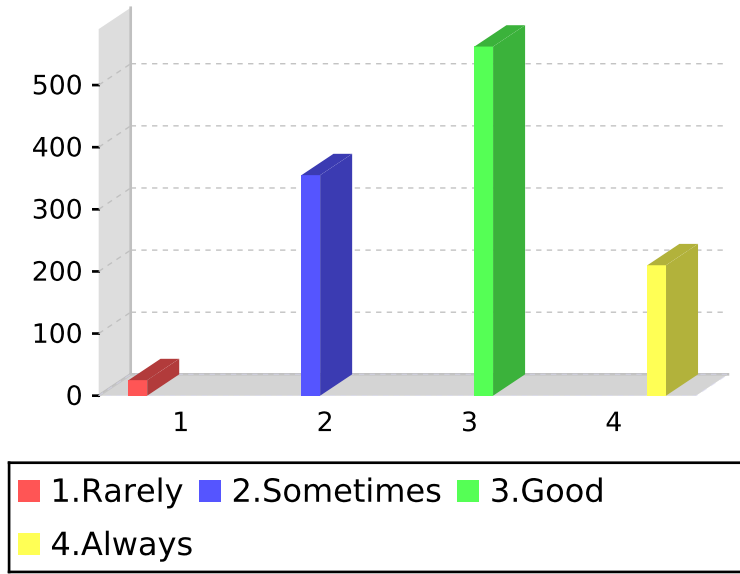
Quality of teaching in your subjects



	Votes Count	Vote (%)
1.Bad	30	2.60
2.Satisfactory	412	35.64
3.Good	441	38.15
4.Excellent	273	23.62

SHIFT I
All Programs
Teachers

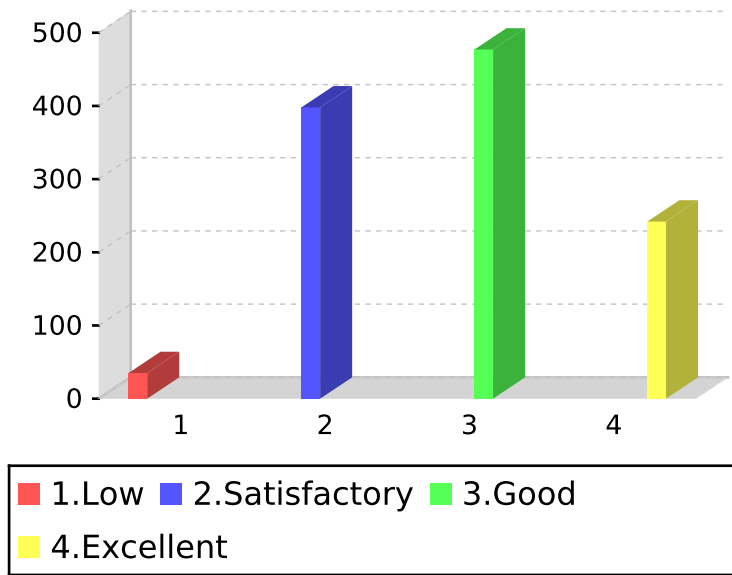
Adherence to the syllabus by the teacher



	Votes Count	Vote (%)
1.Rarely	25	2.17
2.Sometimes	355	30.84
3.Good	562	48.83
4.Always	210	18.25

SHIFT I
All Programs
Teachers

Academic guidance received from your department



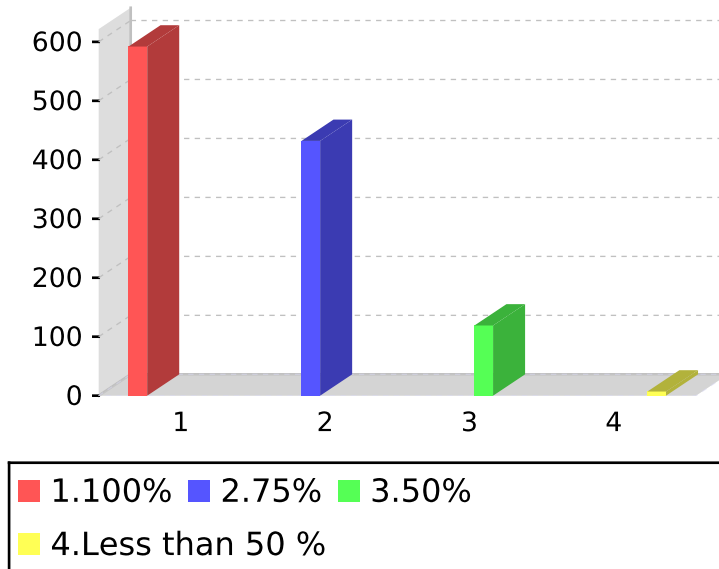
	Votes Count	Vote (%)
1.Low	35	3.04
2.Satisfactory	398	34.58
3.Good	477	41.44
4.Excellent	242	21.03

SHIFT I

All Programs

Testing Methods (Continuous Assessment Test)

CIA Question papers cover the prescribed Syllabus



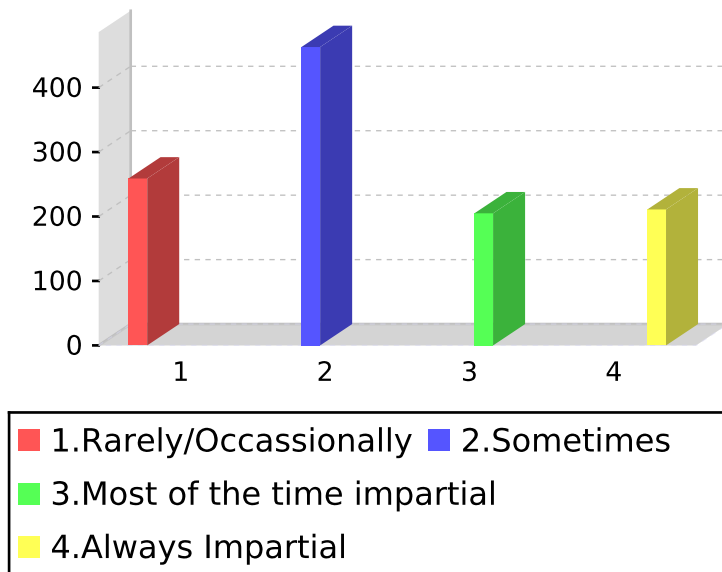
	Votes Count	Vote (%)
1.100%	592	51.48
2.75%	432	37.57
3.50%	119	10.35
4. Less than 50 %	7	0.61

SHIFT I

All Programs

Testing Methods (Continuous Assessment Test)

Impartiality in the evaluation of CIA answer papers



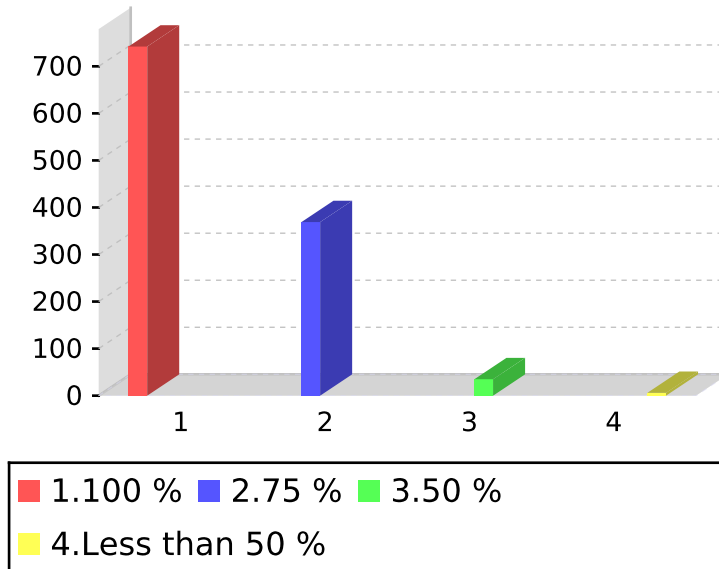
	Votes Count	Vote (%)
1. Rarely/Occasionally	259	22.78
2. Sometimes	463	40.72
3. Most of the time impartial	205	18.03
4. Always Impartial	211	18.56

SHIFT I

All Programs

Testing Methods (Semester Examinations)

Semester question papers cover all the units of the prescribed Syllabus



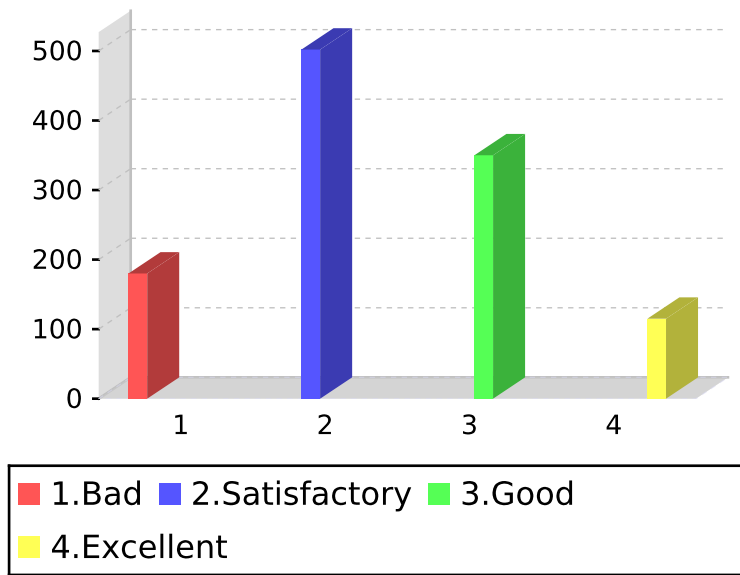
	Votes Count	Vote (%)
1.100 %	742	64.41
2.75 %	369	32.03
3.50 %	35	3.04
4. Less than 50 %	6	0.52

SHIFT I

All Programs

Campus Placement

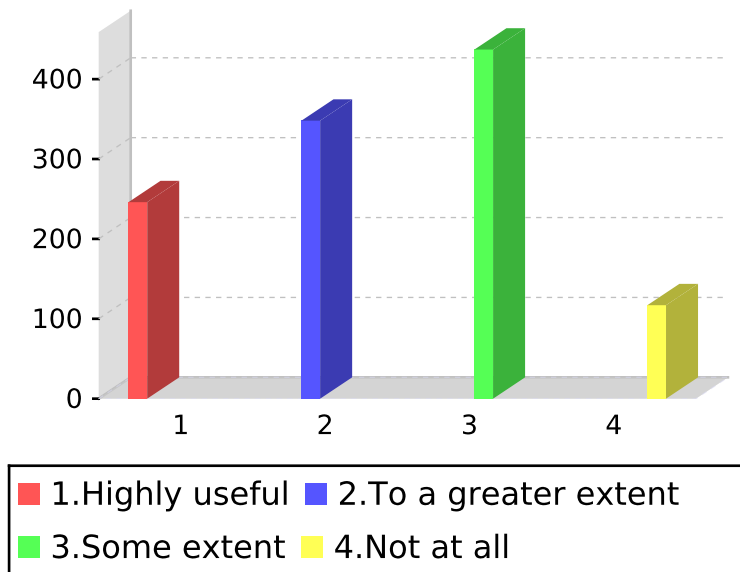
Campus Placement opportunities in the College are



	Votes Count	Vote (%)
1.Bad	180	15.69
2.Satisfactory	502	43.77
3.Good	350	30.51
4.Excellent	115	10.03

SHIFT I
All Programs
Mentoring

I am personally benefited by the Mentoring Programme



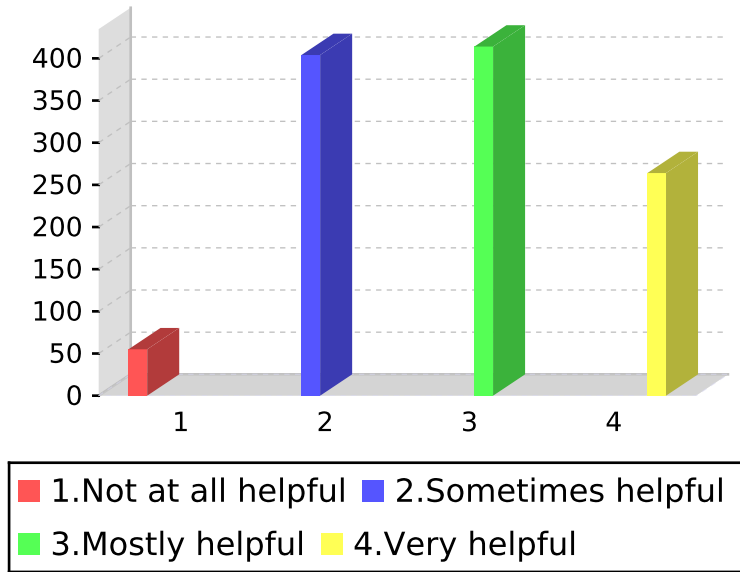
	Votes Count	Vote (%)
1.Highly useful	246	21.45
2.To a greater extent	348	30.34
3.Some extent	437	38.10
4.Not at all	117	10.20

SHIFT I

All Programs

Services Rendered by Non-Teaching Staff

Helpfulness of non-teaching staff



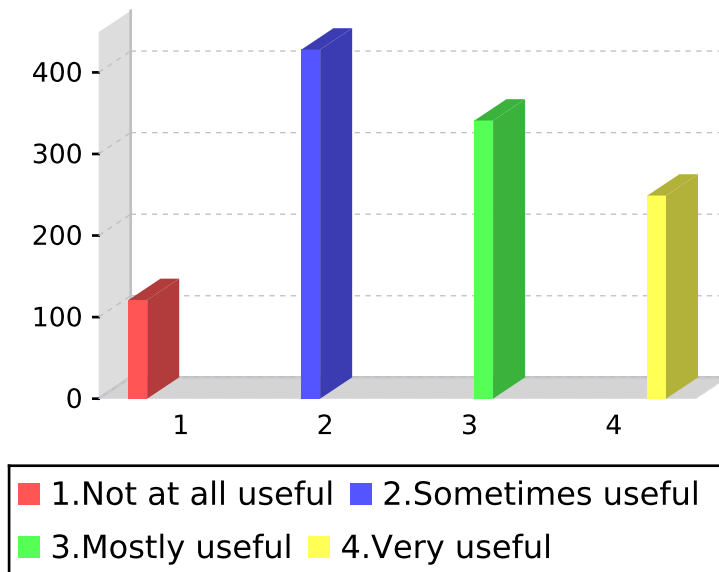
	Votes Count	Vote (%)
1. Not at all helpful	55	4.84
2. Sometimes helpful	404	35.53
3. Mostly helpful	414	36.41
4. Very helpful	264	23.22

SHIFT I

All Programs

Extension and Outreach Programme

Usefulness of the extension programme (Outreach Programme)



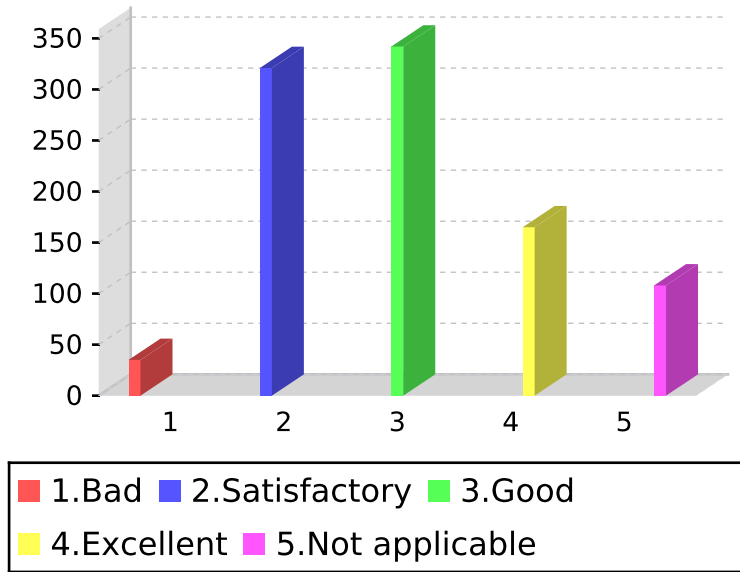
	Votes Count	Vote (%)
1. Not at all useful	121	10.62
2. Sometimes useful	428	37.58
3. Mostly useful	341	29.94
4. Very useful	249	21.86

SHIFT I

All Programs

Infrastructure of the Campus

Laboratory facilities made available: (Only for Science Students)



	Votes Count	Vote (%)
1.Bad	35	3.61
2.Satisfactory	321	33.09
3.Good	342	35.26
4.Excellent	165	17.01
5.Not applicable	108	11.13

SHIFT I

All Programs

Infrastructure of the Campus

Library facilities made available:



	Votes Count	Vote (%)
1.Bad	10	0.95
2.Satisfactory	283	26.77
3.Good	421	39.83
4.Excellent	344	32.54

SHIFT I

All Programs

Infrastructure of the Campus

Class rooms made available:



	Votes Count	Vote (%)
1.Bad	26	2.45
2.Satisfactory	300	28.30
3.Good	457	43.11
4.Excellent	277	26.13

SHIFT I

All Programs

Infrastructure of the Campus

Computer facilities made available:



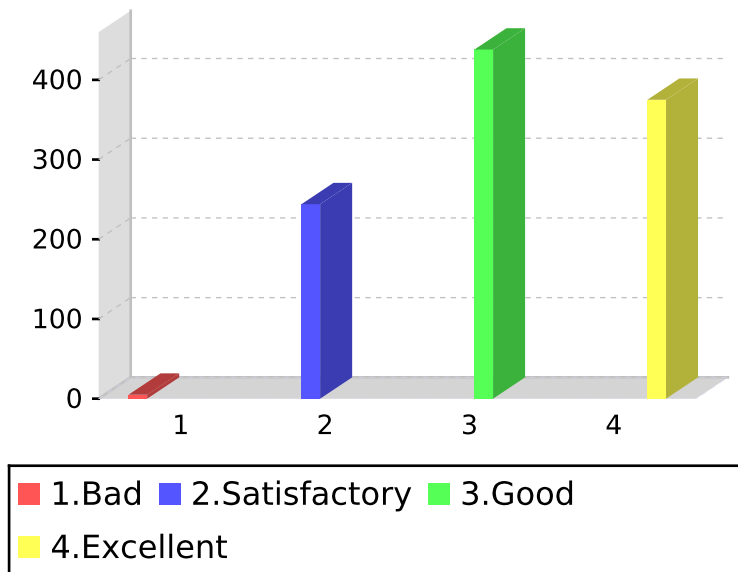
	Votes Count	Vote (%)
1.Bad	38	3.60
2.Satisfactory	327	31.00
3.Good	431	40.85
4.Excellent	259	24.55

SHIFT I

All Programs

Infrastructure of the Campus

Cleanliness of the Campus



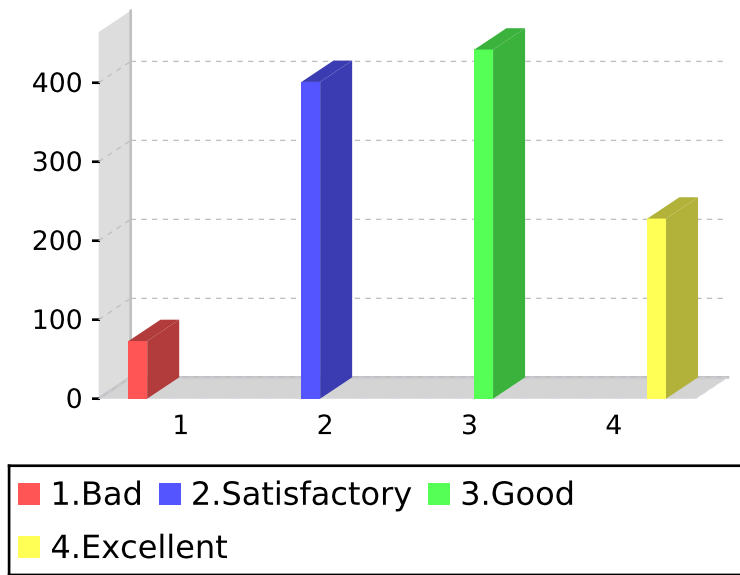
	Votes Count	Vote (%)
1.Bad	5	0.47
2.Satisfactory	244	22.98
3.Good	438	41.24
4.Excellent	375	35.31

SHIFT I

All Programs

Extra-Curricular Activities

Sports facilities made available



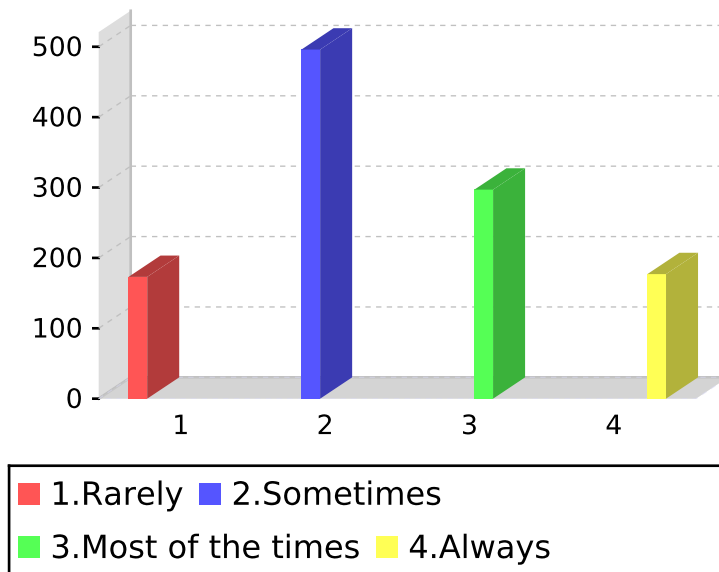
	Votes Count	Vote (%)
1.Bad	73	6.38
2.Satisfactory	401	35.05
3.Good	442	38.64
4.Excellent	228	19.93

SHIFT I

All Programs

Co-curricular Activities

Election to the student council is conducted freely and fairly



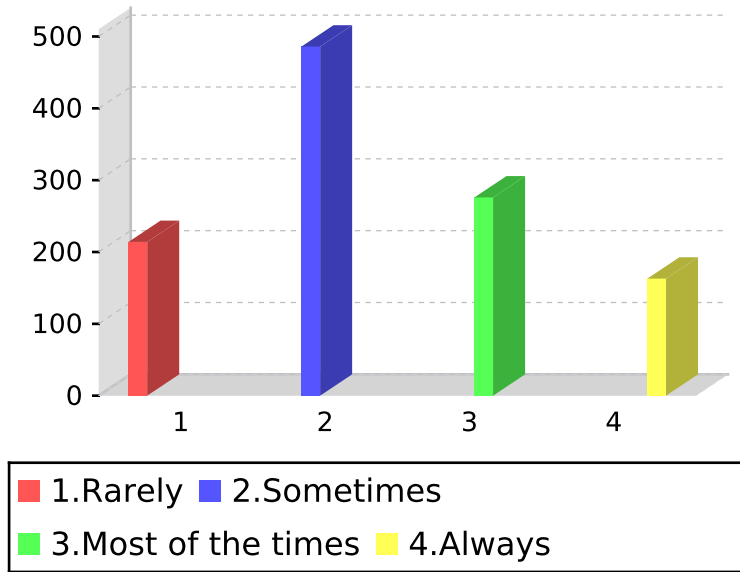
	Votes Count	Vote (%)
1.Rarely	173	15.15
2.Sometimes	496	43.43
3.Most of the times	297	26.01
4.Always	177	15.50

SHIFT I

All Programs

Co-curricular Activities

Student Council represents all the students



	Votes Count	Vote (%)
1. Rarely	214	18.80
2. Sometimes	486	42.71
3. Most of the times	276	24.25
4. Always	163	14.32

SHIFT I

All Programs

Co-curricular Activities

Functioning of Departmental Association



	Votes Count	Vote (%)
1.Bad	66	5.78
2.Satisfactory	426	37.34
3.Good	412	36.11
4.Excellent	237	20.77

SHIFT I

All Programs

Co-curricular Activities

ONLINE STAFF EVALUATION PRACTICE



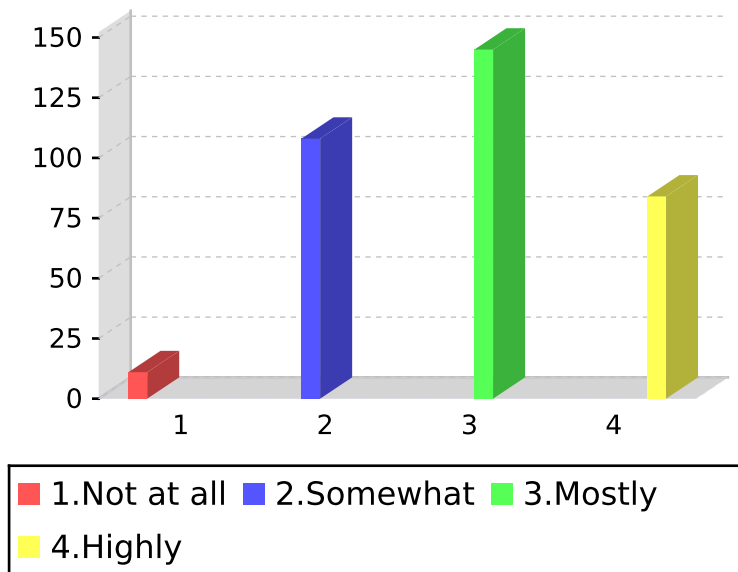
	Votes Count	Vote (%)
1.Bad	71	6.27
2.Satisfactory	462	40.81
3.Good	412	36.40
4.Excellent	187	16.52

SHIFT I

All Programs

Usefulness of the PG Course

The syllabus of Courses is relevant and updated



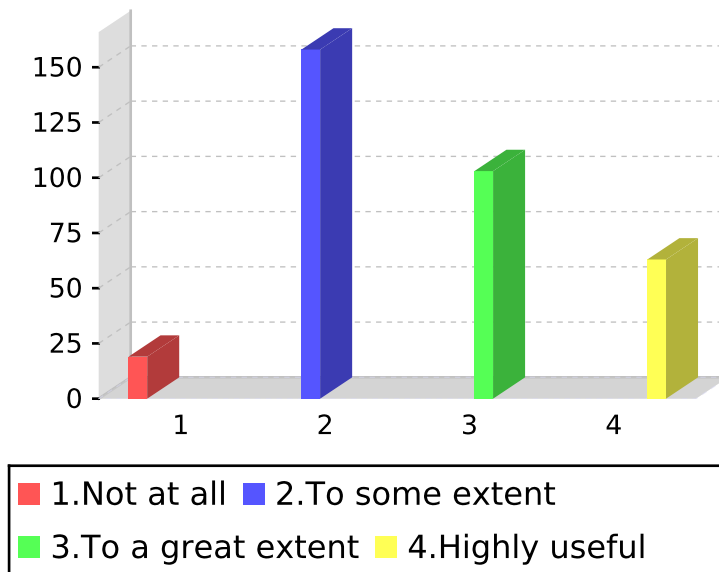
	Votes Count	Vote (%)
1. Not at all	11	3.16
2. Somewhat	108	31.03
3. Mostly	145	41.67
4. Highly	84	24.14

SHIFT I

All Programs

Usefulness of the PG Course

The contents of courses are designed to secure a job (Employability)



	Votes Count	Vote (%)
1. Not at all	19	5.54
2. To some extent	158	46.06
3. To a great extent	103	30.03
4. Highly useful	63	18.37

SHIFT I

All Programs

Usefulness of the PG Course

Relevance of the courses in leading to research



	Votes Count	Vote (%)
1.Bad	6	1.74
2.Satisfactory	129	37.39
3.Good	142	41.16
4.Excellent	68	19.71

SHIFT I

All Programs

Usefulness of the PG Course

Quality of interdisciplinary course



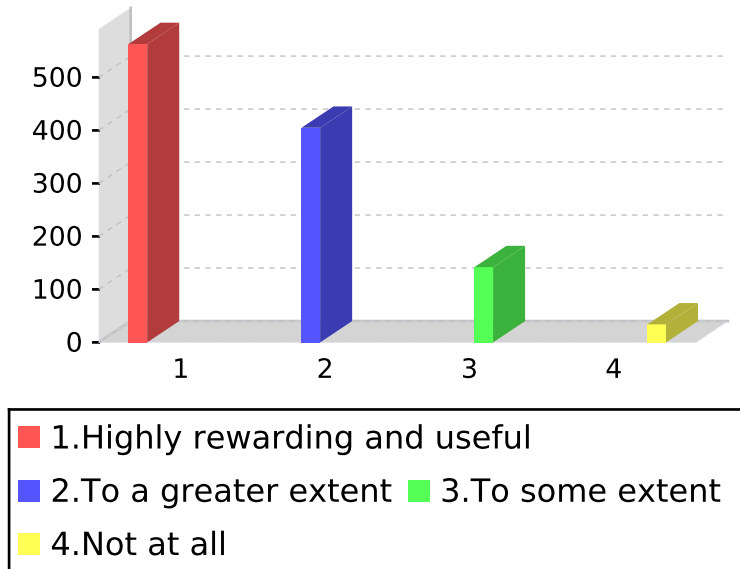
	Votes Count	Vote (%)
1.Bad	8	2.30
2.Satisfactory	107	30.75
3.Good	161	46.26
4.Excellent	72	20.69

SHIFT I

All Programs

Co-curricular Activities

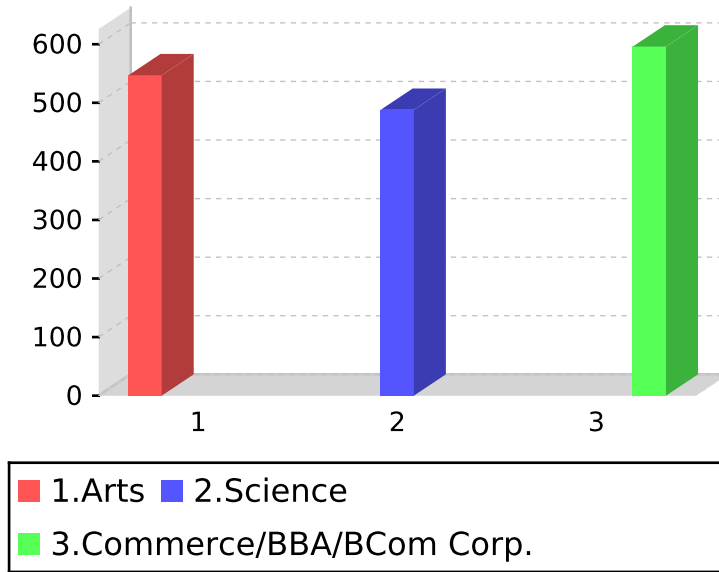
OVERALL EXPERIENCE AT LOYOLA COLLEGE



	Votes Count	Vote (%)
1.Highly rewarding and useful	563	49.21
2.To a greater extent	405	35.40
3.To some extent	142	12.41
4.Not at all	34	2.97

SHIFT II
All Programs
Students Profile

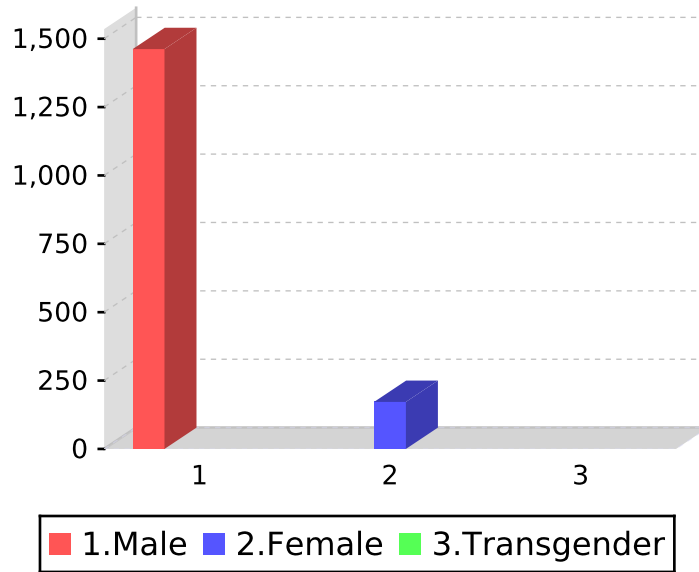
Programme of Study



	Votes Count	Vote (%)
1.Arts	547	33.54
2.Science	488	29.92
3.Commerce/BBA/BCom Corp.	596	36.54

SHIFT II
All Programs
Students Profile

Gender



	Votes Count	Vote (%)
1.Male	1462	89.47
2.Female	172	10.53
3.Transgender	0	0.00

SHIFT II
All Programs

Relevance of Syllabus under restructured curriculum

Quality and relevance of Major Core



	Votes Count	Vote (%)
1.Bad	36	2.63
2.Satisfactory	478	34.92
3.Good	567	41.42
4.Excellent	288	21.04

SHIFT II
All Programs

Relevance of Syllabus under restructured curriculum

Quality and relevance of Skill-Based Programme



	Votes Count	Vote (%)
1.Bad	51	3.73
2.Satisfactory	505	36.89
3.Good	580	42.37
4.Excellent	233	17.02

SHIFT II
All Programs

Relevance of Syllabus under restructured curriculum

Quality and relevance of Internship Programme



	Votes Count	Vote (%)
1.Bad	54	3.95
2.Satisfactory	437	31.94
3.Good	565	41.30
4.Excellent	312	22.81

SHIFT II
All Programs
Teachers

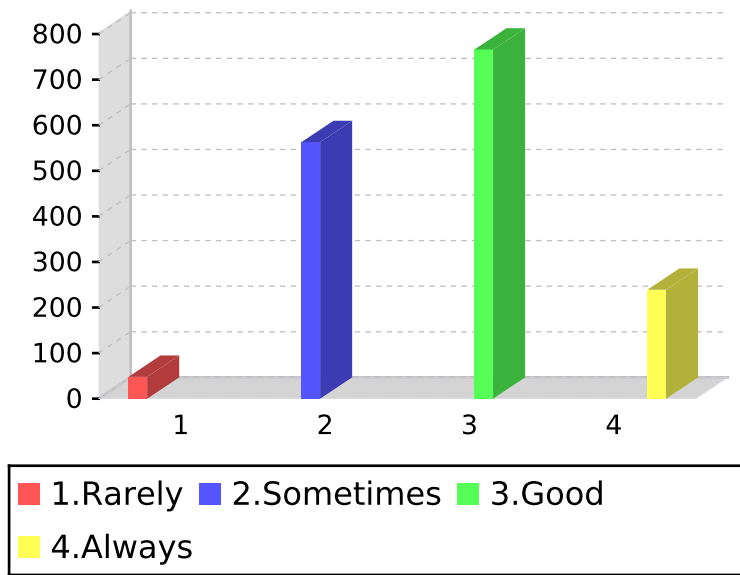
Quality of teaching in your subjects



	Votes Count	Vote (%)
1.Bad	72	4.42
2.Satisfactory	644	39.56
3.Good	614	37.71
4.Excellent	298	18.30

SHIFT II
All Programs
Teachers

Adherence to the syllabus by the teacher



	Votes Count	Vote (%)
1.Rarely	48	2.97
2.Sometimes	563	34.84
3.Good	766	47.40
4.Always	239	14.79

SHIFT II
All Programs
Teachers

Academic guidance received from your department

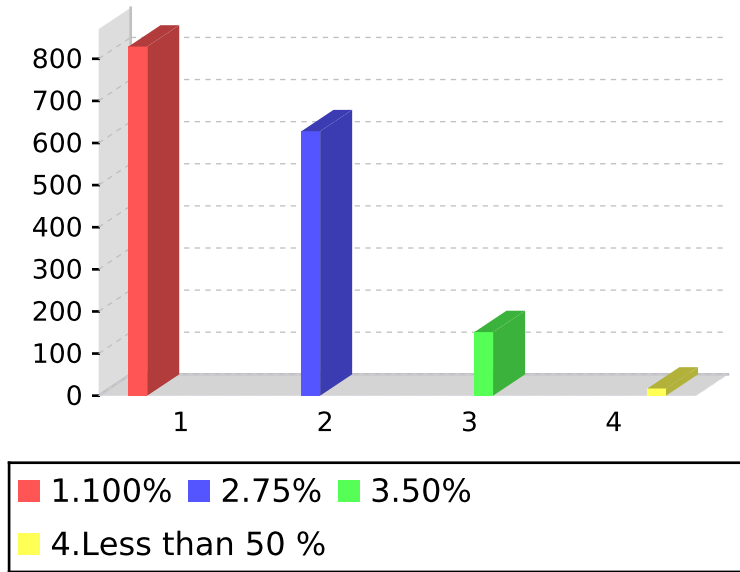


	Votes Count	Vote (%)
1.Low	87	5.36
2.Satisfactory	603	37.15
3.Good	673	41.47
4.Excellent	260	16.02

SHIFT II
All Programs

Testing Methods (Continuous Assessment Test)

CIA Question papers cover the prescribed Syllabus

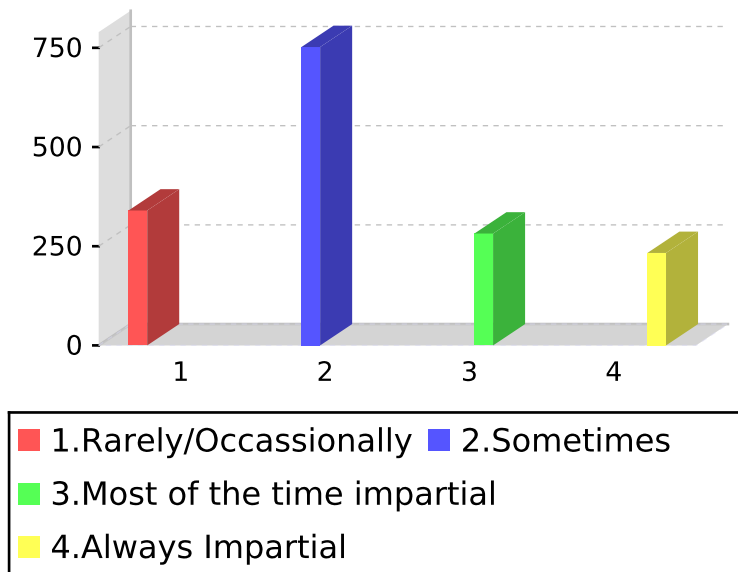


	Votes Count	Vote (%)
1.100%	829	51.02
2.75%	628	38.65
3.50%	151	9.29
4. Less than 50 %	17	1.05

SHIFT II
All Programs

Testing Methods (Continuous Assessment Test)

Impartiality in the evaluation of CIA answer papers

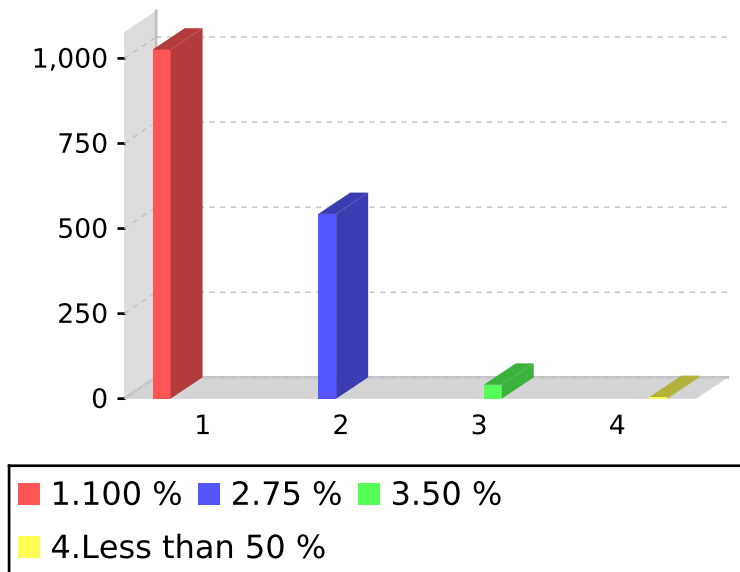


	Votes Count	Vote (%)
1. Rarely/Occasionally	340	21.16
2. Sometimes	752	46.80
3. Most of the time impartial	282	17.55
4. Always Impartial	233	14.50

SHIFT II
All Programs

Testing Methods (Semester Examinations)

Semester question papers cover all the units of the prescribed Syllabus



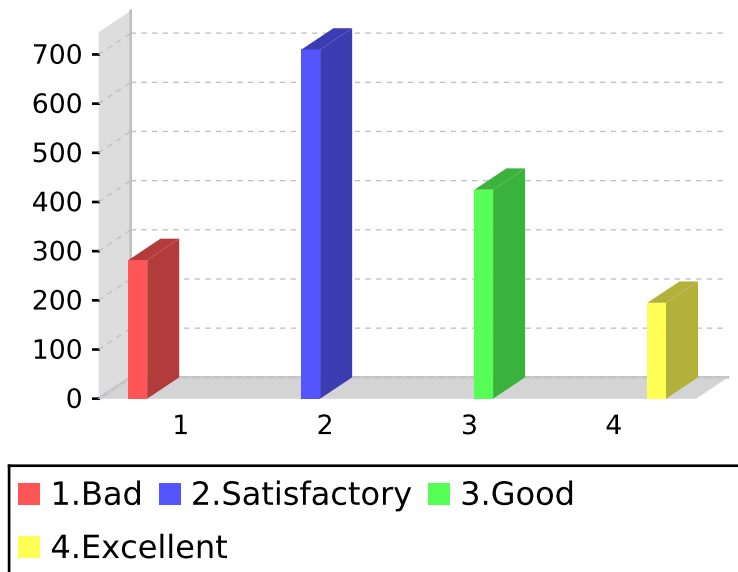
	Votes Count	Vote (%)
1.100 %	1026	63.53
2.75 %	543	33.62
3.50 %	41	2.54
4. Less than 50 %	5	0.31

SHIFT II

All Programs

Campus Placement

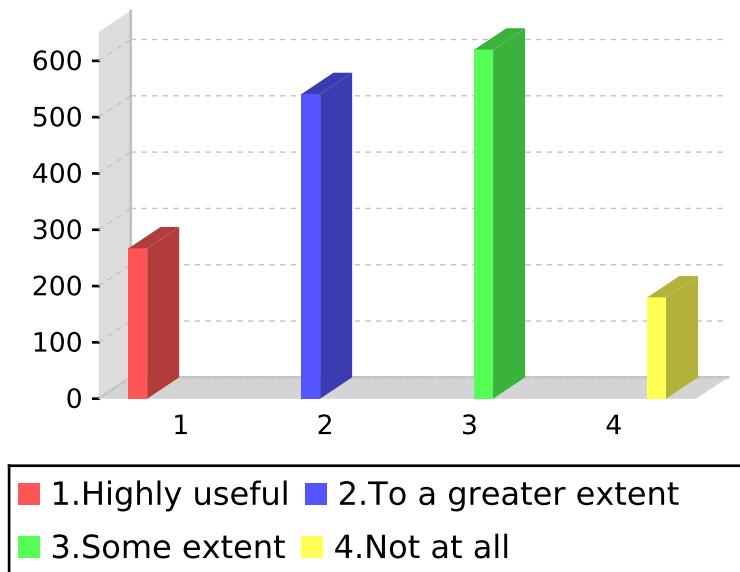
Campus Placement opportunities in the College are



	Votes Count	Vote (%)
1.Bad	282	17.49
2.Satisfactory	710	44.04
3.Good	425	26.36
4.Excellent	195	12.10

SHIFT II
All Programs
Mentoring

I am personally benefited by the Mentoring Programme

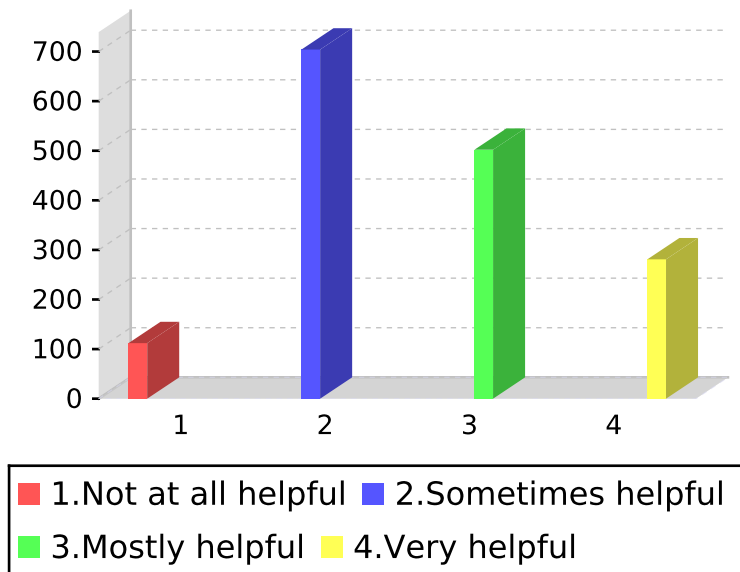


	Votes Count	Vote (%)
1.Highly useful	267	16.60
2.To a greater extent	541	33.64
3.Some extent	620	38.56
4.Not at all	180	11.19

SHIFT II
All Programs

Services Rendered by Non-Teaching Staff

Helpfulness of non-teaching staff

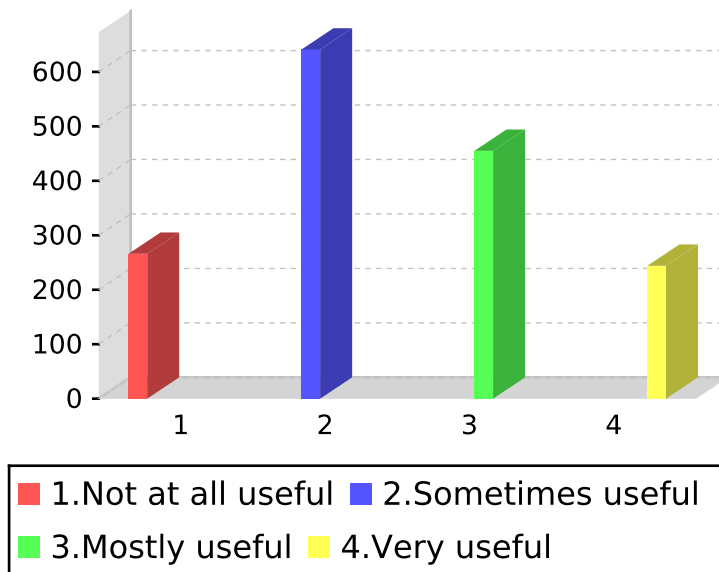


	Votes Count	Vote (%)
1. Not at all helpful	112	7.00
2. Sometimes helpful	704	44.03
3. Mostly helpful	502	31.39
4. Very helpful	281	17.57

SHIFT II
All Programs

Extension and Outreach Programme

Usefulness of the extension programme (Outreach Programme)

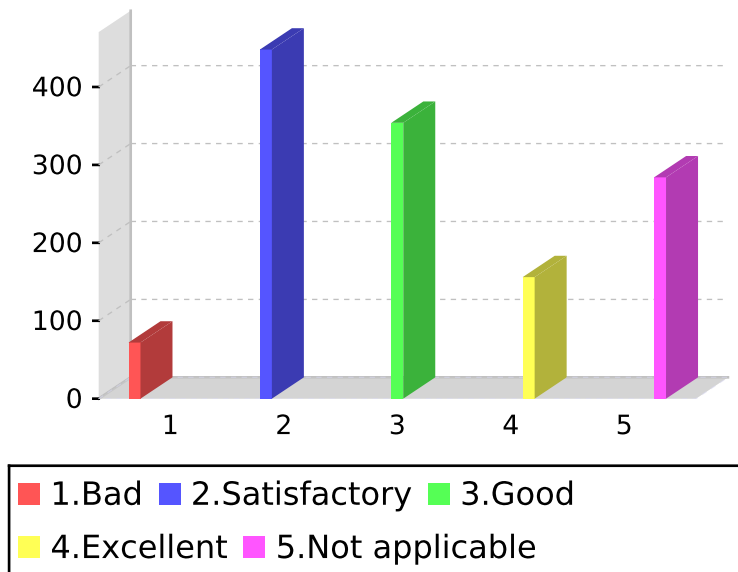


	Votes Count	Vote (%)
1. Not at all useful	266	16.56
2. Sometimes useful	641	39.91
3. Mostly useful	455	28.33
4. Very useful	244	15.19

SHIFT II
All Programs

Infrastructure of the Campus

Laboratory facilities made available: (Only for Science Students)



	Votes Count	Vote (%)
1.Bad	72	5.48
2.Satisfactory	448	34.09
3.Good	354	26.94
4.Excellent	156	11.87
5.Not applicable	284	21.61

SHIFT II
All Programs

Infrastructure of the Campus

Library facilities made available:

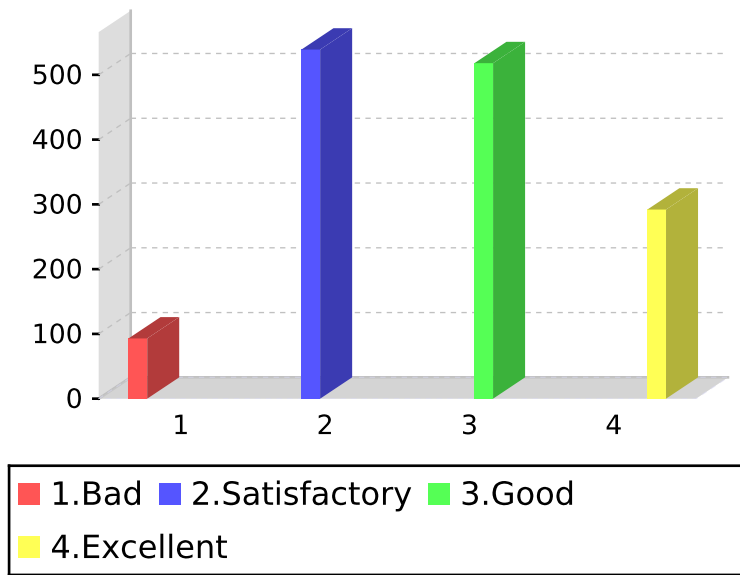


	Votes Count	Vote (%)
1.Bad	42	2.89
2.Satisfactory	490	33.75
3.Good	582	40.08
4.Excellent	338	23.28

SHIFT II
All Programs

Infrastructure of the Campus

Class rooms made available:



	Votes Count	Vote (%)
1.Bad	93	6.45
2.Satisfactory	539	37.38
3.Good	518	35.92
4.Excellent	292	20.25

SHIFT II
All Programs

Infrastructure of the Campus

Computer facilities made available:



	Votes Count	Vote (%)
1.Bad	106	7.43
2.Satisfactory	553	38.78
3.Good	505	35.41
4.Excellent	262	18.37

SHIFT II
All Programs

Infrastructure of the Campus

Cleanliness of the Campus



	Votes Count	Vote (%)
1.Bad	46	3.20
2.Satisfactory	426	29.62
3.Good	555	38.60
4.Excellent	411	28.58

SHIFT II

All Programs

Extra-Curricular Activities

Sports facilities made available



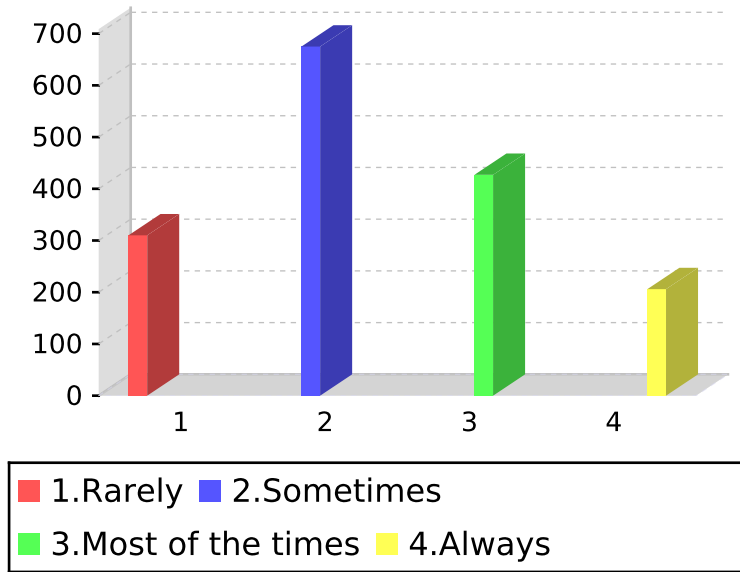
	Votes Count	Vote (%)
1.Bad	189	11.70
2.Satisfactory	677	41.89
3.Good	514	31.81
4.Excellent	236	14.60

SHIFT II

All Programs

Co-curricular Activities

Election to the student council is conducted freely and fairly



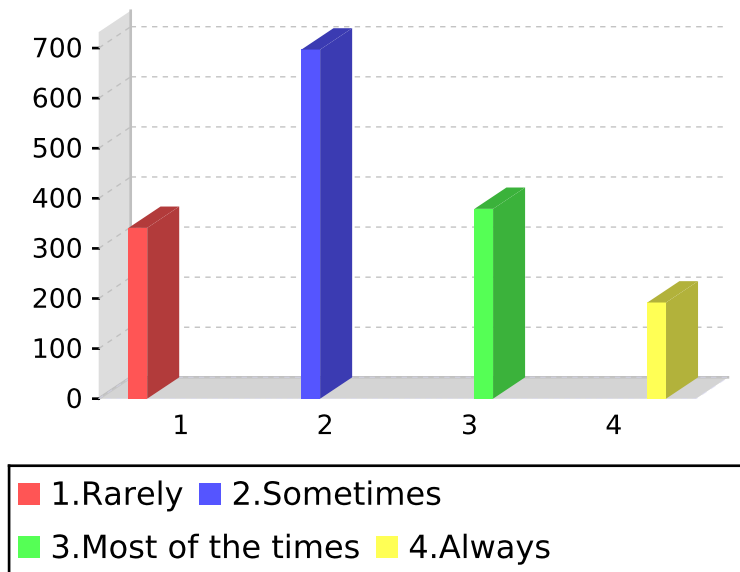
	Votes Count	Vote (%)
1. Rarely	310	19.16
2. Sometimes	675	41.72
3. Most of the times	427	26.39
4. Always	206	12.73

SHIFT II

All Programs

Co-curricular Activities

Student Council represents all the students



	Votes Count	Vote (%)
1. Rarely	341	21.19
2. Sometimes	697	43.32
3. Most of the times	379	23.56
4. Always	192	11.93

SHIFT II
All Programs

Co-curricular Activities

Functioning of Departmental Association



	Votes Count	Vote (%)
1.Bad	160	9.97
2.Satisfactory	667	41.56
3.Good	539	33.58
4.Excellent	239	14.89

SHIFT II

All Programs

Co-curricular Activities

ONLINE STAFF EVALUATION PRACTICE

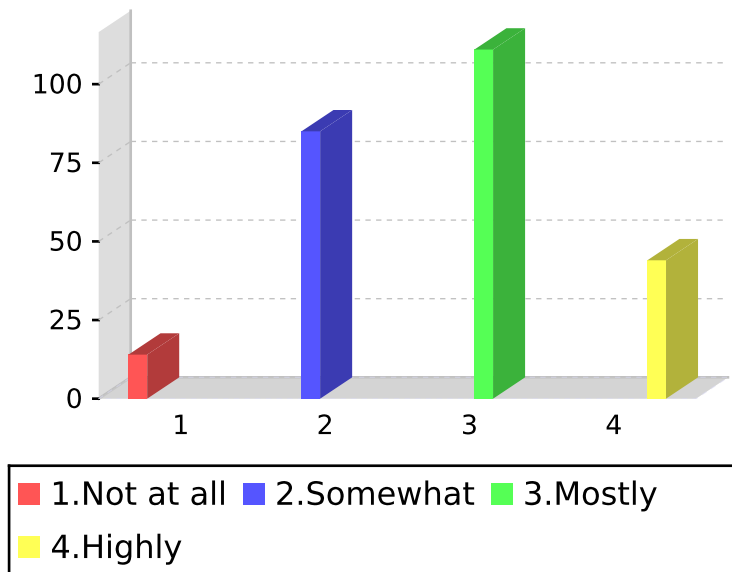


	Votes Count	Vote (%)
1.Bad	125	7.80
2.Satisfactory	701	43.73
3.Good	541	33.75
4.Excellent	236	14.72

SHIFT II
All Programs

Usefulness of the PG Course

The syllabus of Courses is relevant and updated

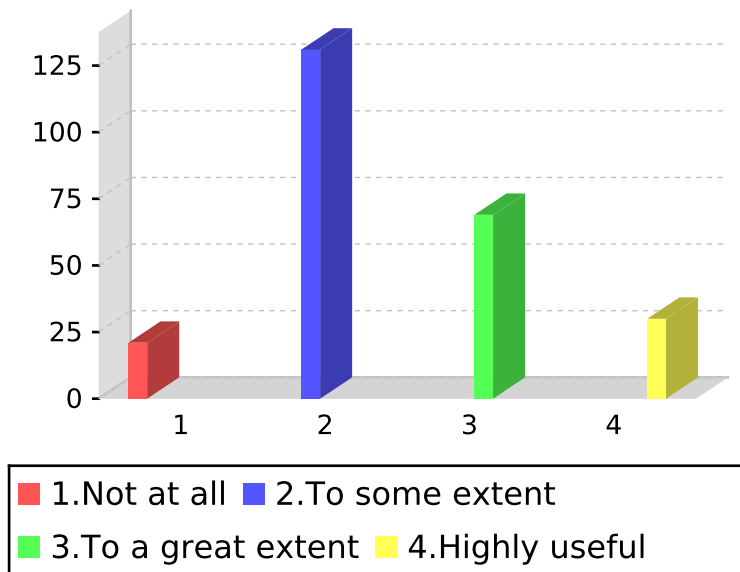


	Votes Count	Vote (%)
1. Not at all	14	5.51
2. Somewhat	85	33.46
3. Mostly	111	43.70
4. Highly	44	17.32

SHIFT II
All Programs

Usefulness of the PG Course

The contents of courses are designed to secure a job (Employability)

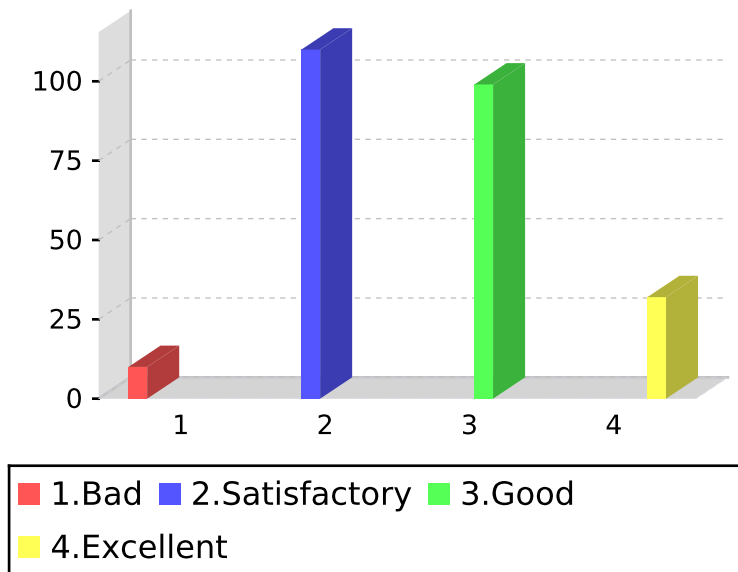


	Votes Count	Vote (%)
1. Not at all	21	8.37
2. To some extent	131	52.19
3. To a great extent	69	27.49
4. Highly useful	30	11.95

SHIFT II
All Programs

Usefulness of the PG Course

Relevance of the courses in leading to research



	Votes Count	Vote (%)
1.Bad	10	3.98
2.Satisfactory	110	43.82
3.Good	99	39.44
4.Excellent	32	12.75

SHIFT II
All Programs

Usefulness of the PG Course

Quality of interdisciplinary course



	Votes Count	Vote (%)
1.Bad	7	2.77
2.Satisfactory	98	38.74
3.Good	109	43.08
4.Excellent	39	15.42

SHIFT II

All Programs

Co-curricular Activities

OVERALL EXPERIENCE AT LOYOLA COLLEGE



	Votes Count	Vote (%)
1.Highly rewarding and useful	635	39.22
2.To a greater extent	673	41.57
3.To some extent	250	15.44
4.Not at all	62	3.83